



Scotney Street, Peterborough

Price: £150,000 - Freehold

- No Chain
- Two reception rooms
- 19'10" Kitchen/breakfast
- Three bedrooms
- Rear garden
- 11'11" Lounge

EPC Rating: Awaited



Accommodation includes

PVCu double glazed entrance door to:

Lounge

3.63m x 3.51m (11'11" x 11'6") PVCu double glazed window to front, radiator.

Inner hallway

Radiator, stairs to first floor landing, door to:

Dining room

3.71m x 3.53m (12'2" x 11'7") PVCu double glazed window to rear, under stairs storage cupboard, radiator, door to:

Kitchen/breakfast room

6.05m x 2.11m (19'10" x 6'11") Fitted with a matching range of base and eye level units with worktop space over, stainless steel sink unit with single drainer and tiled splashbacks tiled surround, space for fridge/freezer, washing machine and cooker, two PVCu double glazed windows to side, radiator, double glazed side door to garden, door to:

Downstairs shower room

Fitted with a three piece suite comprising shower area, wash hand basin, low-level WC and extractor fan, tiled surround, PVCu double glazed window to side, radiator, tiled flooring.

First floor Landing

Fitted carpet, door to:

Bedroom 1

3.63m x 3.53m (11'11" x 11'7") PVCu double glazed window to front, over stairs storage cupboard, radiator.

Bedroom 2

3.71m x 3.51m (12'2" x 11'6") PVCu double glazed window to rear, feature original open fireplace, radiator, door to:

Bedroom 3

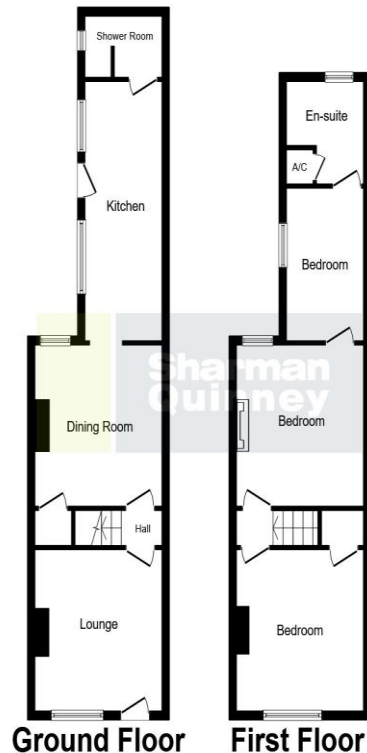
3.51m x 2.11m (11'6" x 6'11") PVCu double glazed window to side, radiator, access to loft space, door to:

Family bathroom

Fitted with a three piece white suite comprising bath with hand shower attachment over, pedestal wash hand basin and low-level WC, extractor fan, double glazed window to rear, radiator.

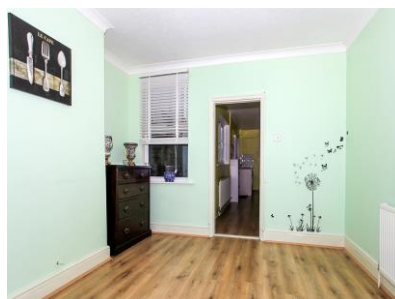
Outside

Rear garden mainly laid to lawn, wooden garden shed.



This plan is for illustration purposes only and may not be representative of the property. Plan not to scale.

Powered by audioagent.com



1: These particulars do not constitute part or all of an offer or contract. 2: The measurements indicated are supplied for guidance only and as such must be considered incorrect. 3: Potential buyers are advised to recheck the measurements before committing to any expense. 4: Sharman Quinney has not tested any apparatus, equipment, fixtures, fittings or services and it is the buyers interests to check the working condition of any appliances. 5: Sharman Quinney has not sought to verify the legal title of the property and buyers must obtain verification from their legal representative. 6: Intending purchasers will be asked to produce identification documentation at a later stage and we would ask your co-operation in order that there will be no delay in agreeing the sale. Ref: PTB204126 - 0002